

FLEXMASTER[®]
HEATING, VENTILATION & AIR CONDITIONING



HVAC Solutions

HVAC Products

Triple Lock[®] Metal Duct

Fabriflex[®] Duct

Metal non-combustible flexible duct is ideally suited for a wide range of HVAC applications.

Triple Lock® T/L

A semi rigid and lightweight non-insulated air duct, manufactured by using a dead soft aluminum strip which is spirally wound and mechanically joined together forming an air tight and leakproof triple lock seam. A self supporting and corrosive resistant ULC-S110 and UL181 Class 1 product is produced providing excellent strength and flexibility. Adaptable to any low to high pressure heating, ventilation and air conditioning system.

Material: Aluminum
 Maximum Rated Velocity: 20.3 m/s (4000 fpm)
 Maximum Positive Pressure: 3 kPa (12 in. WC)
 Maximum Negative Pressure: 0.25 kPa (1 in. WC)
 Temperature Range: -40°F to 600°F
 Bend Radius: 1½ x diameter
 Available Sizes: 4" to 20" (Other sizes on request)
 Standard Lengths: 10ft



ULC Listing: Class 1 Connector

Triple Lock® T/L-SS

Non-insulated Triple Lock™ stainless steel is manufactured using a stainless steel strip which is spirally wound and mechanically joined together forming an air tight and leakproof Triple Lock™ seam. The ULC-S110 and UL-181 Class 1 product combines stainless steel construction with the superior features of Triple Lock™ producing a solid solution for venting extreme temperatures, harsh fumes or hazardous chemicals.

Material: 304/316 Stainless Steel
 Maximum Rated Velocity: 20.3 m/s (4000 fpm)
 Maximum Positive Pressure: 3.0 kPa (12 in. WC)
 Maximum Negative Pressure: 0.25 kPa (1 in. WC)
 Temperature Range: -40°F to 2100°F
 Bend Radius: 2½ x diameter
 Available Sizes: 2" to 20" (Other sizes on request)
 Standard Lengths: 10ft



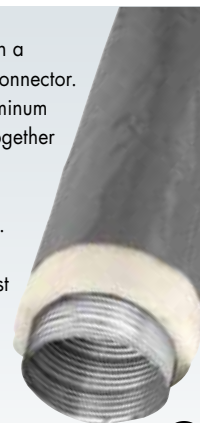
ULC Listing: Class 1 Air Duct

Insulated metal duct with outer vapour barrier controls vapour transmission and condensation.

Triple Lock® T/L-T

A Triple Lock™ insulated aluminum flex duct with a polyethylene vapour barrier - Class 1 air duct/connector. T/L-T is manufactured by using a dead soft aluminum strip, spirally wound and mechanically joined together with an inner duct that is draped with a thick fiberglass insulation and covered with a flame retardant, non-toxic polyethylene vapour barrier. This top-rated UL-181 Class 1 product is an excellent insulated air duct for most energy efficient heating and cooling systems.

Material: Aluminum Core, 1" insulation, polyethylene vapour barrier
 Maximum Rated Velocity: 20.3 m/s (4000 fpm)
 Maximum Positive Pressure: 3.0 kPa (12 in. WC)
 Maximum Negative Pressure: 0.25 kPa (1 in. WC)
 Temperature Range: -40°F to 250°F
 Bend Radius: 1½ x diameter
 Available Sizes: 4" to 20" (Other sizes on request)
 Standard Lengths: 10ft

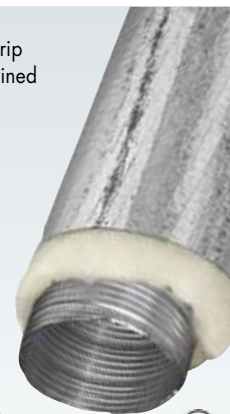


UL Listing: Class 1 Connector

Triple Lock® T/L-M

Manufactured using a dead soft aluminum strip which is spirally wound and mechanically joined together. The inner duct is draped with thick fiberglass insulation and covered by a flame retardant, scrim foil mylar vapour barrier. The ULC-S110 and UL-181 Class 1 product integrates a Triple Lock™ core with an insulated reinforced sleeve to produce an unbeatable thermal air duct which encourages temperature uniformity, absorbs duct vibration and ensures low permeability.

Material: Aluminum Core, 1" Insulation, mylar vapour barrier .05 Perm
 Maximum Rated Velocity: 20.3 m/s (4000 fpm)
 Maximum Positive Pressure: 3.0 kPa (12 in. WC)
 Maximum Negative Pressure: 0.25 kPa (1 in. WC)
 Temperature Range: -40°F to 250°F
 Bend Radius: 1½ x diameter
 Available Sizes: 4" to 20" (Other sizes on request)
 Standard Lengths: 10ft



ULC Listing: Class 1 Connector



A perforated inner-core reduces noise generated by mechanical equipment or system vibration.

Triple Lock® T/L-A-T/L

An insulated acoustic air duct, manufactured by using a dead soft aluminum strip which is perforated, spirally wound and mechanically joined together. The inner duct is draped with thick fiberglass insulation and sleeved by a triple-lock aluminum jacket; T/L-A-T/L relies on the perforated core with an open area of 20-25% to create a duct with superb acoustic qualities. The complete high pressure duct assembly is excellent for HVAC systems requiring low noise.

Material: Perforated aluminum core (min.25%), 1" insulation, aluminum vapour barrier
 Maximum Rated Velocity: 20.3 m/s (4000 fpm)
 Maximum Positive Pressure: 1.5 kPa (6 in. WC)
 Maximum Negative Pressure: 0.25 kPa (1 in. WC)
 Temperature Range: -40°F to 400°F
 Bend Radius: 2 x diameter
 Available Sizes: 4" to 10" (Other sizes on request)
 Standard Lengths: 10ft ULC Listing: Class 1 Connector



Triple Lock® T/L-A

An insulated acoustic air duct, manufactured by using a dead soft aluminum strip which is perforated, spirally wound and mechanically joined together. The inner duct is draped with thick fiberglass insulation and covered by a flame retardant, non-toxic polyethylene vapour barrier. This top-rated UL-181 Class 1 product uses a Triple Lock™ (T/L basic) perforated core with an open area of 20% to 25% to completely cushion sounds, such as air movement and duct vibrations.

Material: Perforated aluminum core (min 25%), 1" insulation, polyethylene vapour barrier .10 Perm
 Maximum Rated Velocity: 20.3 m/s (4000 fpm)
 Maximum Positive Pressure: 1.5 kPa (6 in. WC)
 Maximum Negative Pressure: 0.25 kPa (1 in. WC)
 Temperature Range: -40°F to 250°F
 Bend Radius: 1½ x diameter
 Available Sizes: 4" to 10" (Other sizes on request)



Standard Lengths: 10ft UL Listing: Class 1 Connector

Medical Grade

Triple Lock® T/L-AMG

Medical grade insulated acoustic air duct is manufactured with a three ply Triple Lock® mechanical airtight seam, using a dead soft perforated aluminum strip, spirally wound and mechanically joined together. The fiberglass blanket is totally isolated from the air stream by a seamless polyethylene liner, covered with thick R-8.0 fiberglass insulation and a flame retardant, scrim foil Mylar vapour barrier.

Triple Lock® Medical grade offers greater flexibility, exceptional strength and acoustic qualities. It is vibration deadening, lightweight and self-supporting; corrosive and highly puncture resistant.

Features anti-microbial properties and thermal reliability. The air stream is protected by a seamless polyethylene liner and uses a Triple Lock® (T/L basic) perforated core with an open area of 20% to 25% to completely cushion sounds, such as air movement and duct vibrations and is ideal for use in medical care facilities and should provide a comparatively noise free environment.



Acoustic Properties for Standard and Acoustic Ducts

Straight duct - insertion loss (db) in forward flow conditions for 10 feet length

Model #	Center Frequency (Hz)	125	250	500	1000	2000	4000
T/L-AM8	0 FPM	6	10	25	31	40	27
	2500 FPM	6	11	25	>32	>38	25

Material:	Perforated aluminum core, polyethylene vapour liner, R-8.0 insulation, mylar vapour barrier
Maximum Rated Velocity:	20.3 m/s (4000 fpm)
Maximum Positive Pressure:	1.5 kPa (6 in. WC)
Maximum Negative Pressure:	0.25 kPa (1 in. WC)
Temperature Range:	-40°F to +250°F (-40°C to +121°C)
Bend Radius:	1½ x diameter
Available Sizes:	2" - 10" (Other sizes on request)
Standard Lengths:	10ft, 5ft Boxed (LEEDS)
UL Listing	UL181 Class 1 Duct

NOTE: This UL Class 1 product has a flame spread rating of not over 25 without evidence of continued progressive combustion and a smoke developed rating of not over 50.



A patented outside mechanical lock provides a positive seal and eliminates the need for problematic adhesives. Choose a duct to handle internal operating pressures, provide thermal reliability or meet critical noise criteria levels.

Fabriflex® Ducting

Fab 3 (Non-Insulated)

This non-insulated flexible air duct, features a reinforced aluminized trilaminate, spirally wound and mechanically locked together by a corrosive resistant galvanized steel helix. This advanced tear resistant ULC-S110 and UL-181 Class 1 product is strengthened by the outside metal helix which with the resilient duct core, provides essential product integrity to achieve the high pressure rating, both positive and negative, required by many engineered HVAC duct systems.

Material: Aluminum, foil, fiberglass mesh trilaminate
 Maximum Rated Velocity: 20.3 m/s (4000 fpm)
 Maximum Positive Pressure: 3.0 kPa (12 in. WC)
 Maximum Negative Pressure: 0.13 kPa (0.5 in. WC)
 Temperature Range: -20°F to 250°F
 Bend Radius: 1 x diameter
 Available Sizes: 4" to 18" (Other sizes on request)
 Standard Lengths: 25ft
 ULC Listing: Class 1 Air Duct

Fab 3T (Insulated)

Core duct: Basic Fab 3
 Thermal Resistance: Available: R4.2, R6, R8
 Polyethylene vapour barrier
 Vapour Barrier Permeance .10 Perm A.S.T.M E96 Procedure A
 Flame/Smoke : Less than 25/50
 UL Listing: Class 1 Air Duct

Fab 3M (Insulated)

Core duct: Basic Fab 3
 Thermal Resistance: Available: R4.2, R6, R8
 Mylar vapour barrier
 Vapour Barrier Permeance .05 Perm A.S.T.M E96 Procedure A
 Flame/Smoke : Less than 25/50
 ULC Listing: Class 1 Air Duct



Fabriflex® Ducting

Fab 4 (Non-Insulated)

This extremely tough non-insulated flexible air duct is produced with a heavy coated fiberglass cloth with flame retardant coating which is mechanically locked together with a scuff protecting galvanized steel helix. This impact resistant ULC-S110 and UL-181 Class 1 product is shaped by the outside helix which locks together the strong duct fabric. This supplies the strength necessary to obtain the air duct rating in a non-insulated form required for many high pressure air distribution networks.

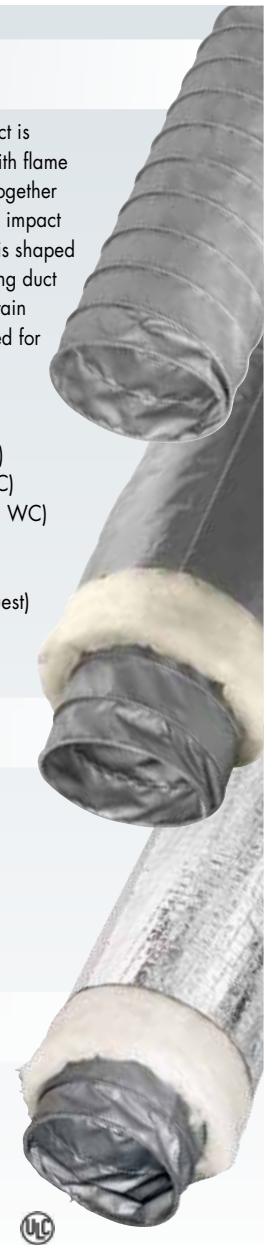
Material: Heavy coated fiberglass cloth
 Maximum Rated Velocity: 20.3 m/s (4000 fpm)
 Maximum Positive Pressure: 3.0 kPa (12 in. WC)
 Maximum Negative Pressure: 0.13 kPa (0.5 in. WC)
 Temperature Range: -20°F to 250°F
 Bend Radius: 1 x diameter
 Available Sizes: 4" to 20" (Other sizes on request)
 Standard Lengths: 25ft
 ULC Listing: Class 1 Air Duct

Fab 4T (Insulated)

Core Duct: Basic Fab 4
 Thermal Resistance: Available: R4.2, R6, R8
 Polyethylene vapour barrier
 Vapour Barrier Permeance .10 Perm A.S.T.M E96 Procedure A
 Flame/Smoke : Less than 25/50
 UL Listing: Class 1 Air Duct

Fab 4M (Insulated)

Core Duct: Basic Fab 4
 Thermal Resistance: Available: R4.2, R6, R8
 Mylar vapour barrier
 Vapour Barrier Permeance .05 Perm A.S.T.M E96 Procedure A
 Flame/Smoke : Less than 25/50
 ULC Listing: Class 1 Air Duct



Flexible ducting connects mixing boxes, light troffers, diffusers, and other terminals to air distribution systems.

Fabriflex® Low Pressure Ducting

Fab 5 (Non-Insulated)

A non-insulated flexible air duct of reinforced aluminized trillaminate that is mechanically locked together by a corrosive resistant galvanized steel helix. An ideal LC-S110 and UL-181 Class 1 product, formed by the protective outside helix which interlocks with the smooth and reinforced line to produce an exceptional low to medium pressure duct often required by VAV commercially designed air conditioning and heating applications.

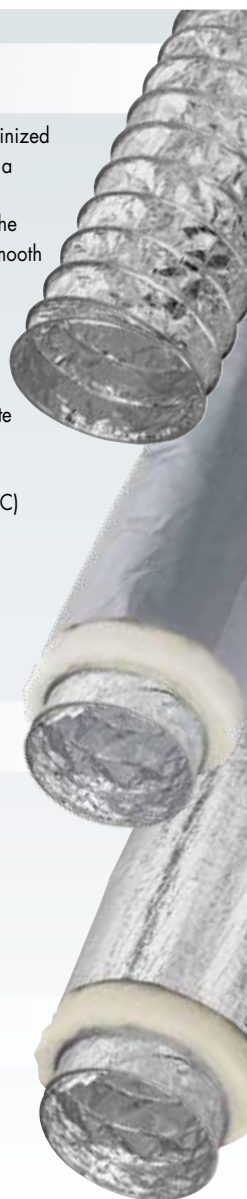
Material: Aluminum, foil, fiberglass mesh trillaminate
 Maximum Rated Velocity: 20.3 m/s (4000 fpm)
 Maximum Positive Pressure: 1.5 kPa (6 in. WC)
 Maximum Negative Pressure: 0.13 kPa (0.5 in. WC)
 Temperature Range: -20°F to 250°F
 Bend Radius: 1 x diameter
 Available Sizes: 4" to 20" (Other sizes on request)
 Standard Lengths: 25 ft
 Flame/Smoke : Less than 25/50
 ULC Listing: Class 1 Connector

Fab 5T (Insulated)

Core Duct: Basic Fab 5
 Thermal Resistance: Available: R4.2, R6, R8
 Polyethylene vapour barrier
 Vapour Barrier Permeance .10 Perm
 A.S.T.M E96 Procedure A
 Flame/Smoke : Less than 25/50
 UL Listing: Class 1 Connector

Fab 5M (Insulated)

Core Duct: Basic Fab 5
 Thermal Resistance: Available: R4.2, R6, R8
 Mylar vapour barrier
 Vapour Barrier Permeance .05 Perm
 A.S.T.M E96 Procedure A
 Flame/Smoke : Less than 25/50
 ULC Listing: Class 1 Connector



Fabriflex® Acoustical Ducting

Fab 6T (Insulated)

This acoustically rated flexible air duct consists of a non woven spun nylon material mechanically bonded to a scuff resistant galvanized steel helix. This low pressure UL 181 Class 1 product has excellent broadband acoustic properties ideally suited for lowering dB levels.

Core duct: Spun Nylon Polyamid
 Thermal Resistance: Available: R4.2, R6, R8
 Polyethylene vapour barrier
 Vapour Barrier Permeance .10 Perm A.S.T.M E96 Procedure A
 Maximum Rated Velocity: 27.9 m/s (5500 fpm)
 Maximum Positive Pressure: 1.5 kPa (6 in. WC)
 Maximum Negative Pressure: 1.25 kPa (5 in. WC)
 Temperature Range: -20°F to 250°F
 Bend Radius: 1 x diameter
 Available Sizes: 2 1/2" to 20"
 (Other sizes on request)
 Standard Lengths: 25 ft
 Flame/Smoke : Less than 25/50
 UL Listing: Class 1 Duct

Fab 6M (Insulated)

Core duct: Basic Fab 6
 Thermal Resistance: Available: R4.2, R6, R8
 Mylar vapour barrier
 Vapour Barrier Permeance .05 Perm
 A.S.T.M E96 Procedure A
 Flame/Smoke : Less than 25/50
 UL Listing: Class 1 Duct





Our Fabriflex line of flexible ducting products conforms to NFPA standards 90A and 90B; tested in accordance with ULC-S110M or UL-181 standards under — Factory-Made Air Ducts and Air Connectors. Flexible ducts must be installed in accordance with the conditions of their ULC/UL Listings.

Fabriflex® Ducting

Fab 8T/M

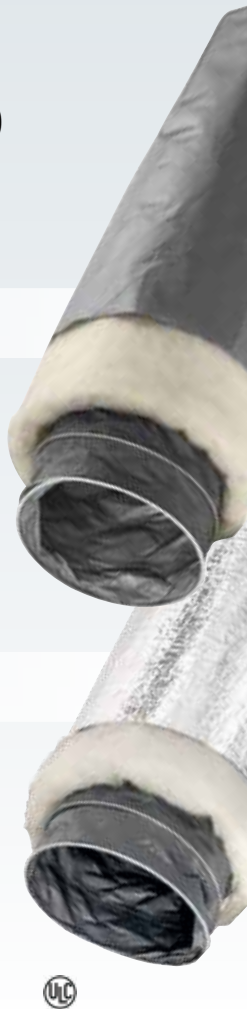
Material: CPE core
Maximum Rated Velocity: 5500 F.P.M
Maximum Positive Pressure: 10" w.g. positive
Maximum Negative Pressure: 5" w.g.
negative 1" w.g. for 18" and 20" diameter
Temperature Range: -20°F to +250°F
Bend Radius: 1 x diameter
Available Sizes: 2" to 20" (Other sizes on request)
Standard Lengths: 25ft
Flame/Smoke : Less than 25/50
ULC Listing: Class 1 Connector

Fab 8T (Insulated)

Core duct: CPE
Thermal Resistance: Available: R4.2, R6, R8
Polyethylene vapour barrier
Vapour Barrier Permeance .10 Perm
A.S.T.M E96 Procedure A
Flame/Smoke : Less than 25/50
UL Listing: Class 1 Connector

Fab 8M (Insulated)

Core duct: CPE
Thermal Resistance: Available: R4.2, R6, R8
Mylar vapour barrier
Vapour Barrier Permeance .05 Perm
A.S.T.M E96 Procedure A
Flame/Smoke : Less than 25/50
ULC Listing: Class 1 Connector



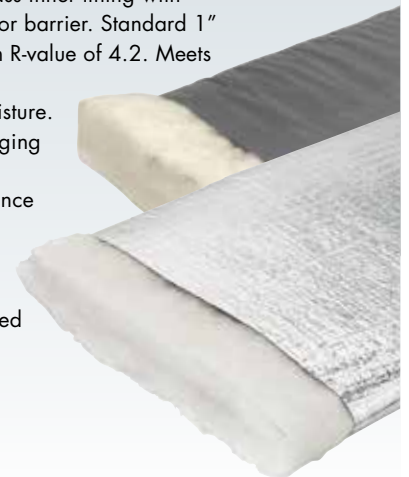
Unless otherwise designated, the term "flexible air duct" is used for all ducts classified by ULC as either flexible air ducts or flexible connectors.

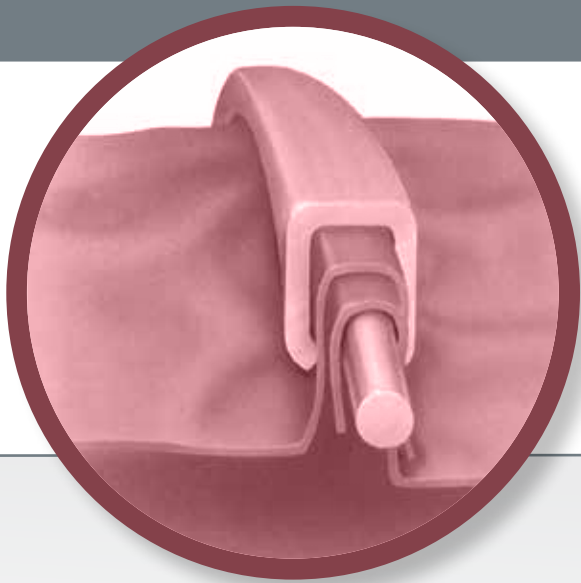
These provisions apply to ducts used for indoor comfort heating, ventilating, and air conditioning service. They do not apply to service for conveying particulates, corrosive fumes and vapours, high temperature air or contaminated atmosphere. Project specifications must define specific materials, pressure limits, velocity limits, friction rate, thermal conductivity, acoustical ratings, and other pertinent or relevant attributes.

Insulation Sleeves

Factory assembled fiberglass inner lining with polyethylene or Mylar vapor barrier. Standard 1" insulating blanket offers an R-value of 4.2. Meets guidelines for anti-bacterial and anti-moisture. Available in diameters ranging from 4" to 20" (other sizes on request). Thermal Resistance Available: R4.2, R6, R8. Polyethylene or Mylar vapour barrier
UL Classified as a Registered Component (RC).

Vapour Barrier Permeance
A.S.T.M E96 Procedure A
Polyethylene .10 Perm
Mylar .05 Perm





NovaFlex's patented manufacturing technique, utilizing "mechanical lock construction", allows us to produce specialized products not available from other sources. This process combines unmatched product integrity and durability with the flexibility to quickly meet custom orders, large or small.

Unlike conventional methods using adhesives, our process requires no curing and is more resistant to temperature and environmental extremes. The outside metal helix also contributes to duct strength, durability and scuff-resistance.

Coupled with our complete line of extruded thermoplastic ducts, NovaFlex offers the widest selection of individual products in the industry.

Vinyl Blower Duct (Fabric Reinforced)

Fabric reinforced vinyl coated blower duct, ideal for fresh air supply. Manufactured with a molecularly bonded wearstrip for scuff resistance. An economical duct for large volume air transfer. This duct is reinforced with a spring steel helix and covered with a urethane wearstrip.

Material: Polyester single fabric coated with vinyl
Diameters: 6" to 24" I.D. Larger sizes available
Bend Radius = 12" diam. = 7"
Weight: 6" I.D. = .7 lbs/ft
Length 25ft
Compression Ratio: 10:1
Temperature Range: -20°F to +180°F



U-Lok 1500

A more robust, two ply high temperature service duct. Two plies high temperature resistant coated fabric offers a longer service life.

Applications: Hot air extraction, heat shield or compensator, furnace construction, iron and steel works

*Air velocity should be less than 50m/sec

Material: Alumina coated, textile glass fabric reinforced with fine V4A wire.

Construction: Mechanical bond, galvanized steel helix

Diameters: 4" to 24" I.D. Larger sizes available.

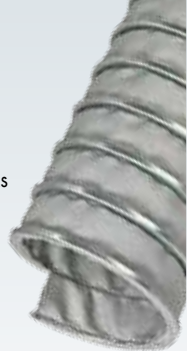
Weight: 6" I.D. = 2.01 lbs/ft.

Length: 25 ft.

Compression Ratio: 4:1

Temperature range: -200°F -129°C) to +1500°F (816°C). Intermittent.

Colour: Grey



Flame Retardant TPR

This flame retardant welding fume extraction duct and cable cover is designed specifically for welding environments including sparks and slag.

Material: Flame retardant thermoplastic rubber

Diameters: 2" to 12" / Weight: 6" = .77 lbs/ft

Lengths: 25 ft & 50 ft to 8" diam., 25' - 10" and up

Compression Ratio: 2:1

Temperature range: -40°F to +275°F, continuous, +300°F (intermittent)



Static Dissipating (Urethane)

Manufactured using inherently dissipating urethane with wire helix to allow for safe grounding when used with metallic fittings. This results in permanent protection against electrostatic discharge. The special molecular bonded construction generates less turbulence. Lightweight and extremely flexible, it will perform under the toughest conditions. Excellent flexibility and maximum abrasion resistance. Superior tear resistance and high tensile strength. Clear construction for visual monitoring.

Temperature range: -65°F to 200°F

Lengths: 25 & 50 ft

Sizes: 2" to 12" (larger diameters available, please contact the factory)

Compression ratio: 2:1



For complete Ducting line please visit www.novaflex.com



Flexmaster conical spin collars average 36% less static pressure (SP) drop and 45% less total pressure (TP) drop than conventional fish-lock collars.

Straight Spin-On Collars (1801 & 1802)

Assembly comes complete with quality regulator and retractable spring bearing hardware. Available in diameters ranging from 4" to 12"; with or without damper. Save approximately 43% on installation time over conventional fish-lock collars.



Long Body Spin-On Collars (1803 & 1804)

Diameters range from 6" to 20"; with or without damper. 24 gauge construction. Complete with quality regulator and retractable spring bearing hardware. Extra long body allows damper blade to be less obtrusive in linear air stream.

1804 s/o comes with identical 1802 hardware.

Designed for use with spiral duct.



Conical Spin-In Collars (1701 & 1702)

Conicals average 36% less Static Pressure (SP) drop and 45% less Total Pressure (TP) drop than conventional spin-on collars. Superior quality and design. Diameters range from 4" to 16"; with or without damper.



Spin-On Collars c/w Stand-off Regulator (1806)

Complete with 8" body, 1/4" square rod, locking quadrant, heavy duty handle, 1" standoff regulator; with or without damper; in diameters ranging from 6" to 20". Blades are specially designed for optimum linear balancing. Recommended for insulated ductwork.



ACCESSORIES

For quality job, use our water-based, mold and mildew resistant, low VOC emitting, UV resistant, High-Velocity Ductbond Duct Sealant.

Seal-Ons 2000 Series

Flexmaster® Series 2000/2001

Seal-On Connectors, manufactured from 26 gauge, or heavier, galvanized steel. Meets ANSI/SMACNA Duct Construction Standards.

Standard Construction
26-gauge Galvanized Steel
Body 26-gauge Galvanized
Steel Damper 1" formed
flange, with pressure sensitive
polyethylene high density
adhesive gasket, provides air-
tight connection.

Available in sizes from 4" to 16"

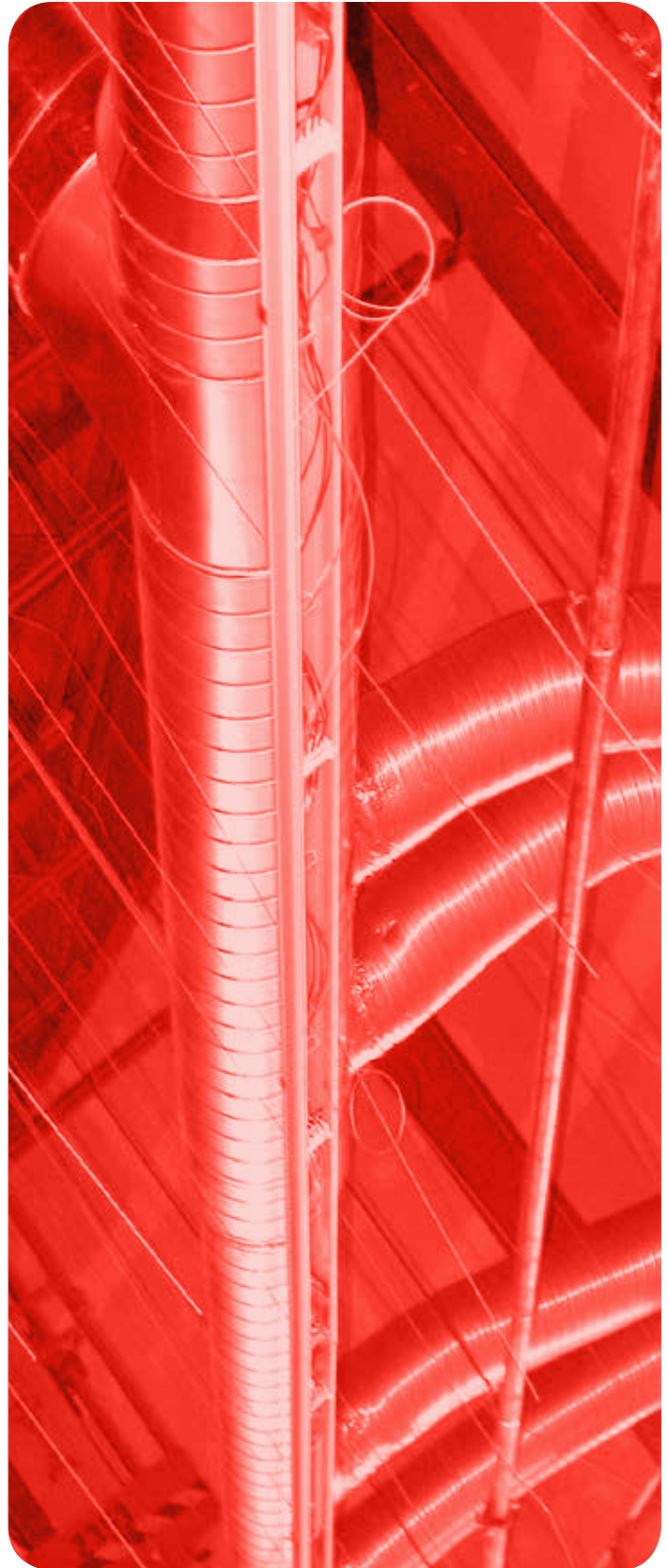
Optional Construction
24 ga, 22 ga, or 20 ga,
aluminum or stainless steel.



Duct Sealant

Ductbond is a high velocity duct sealant, tested to ASTM G-21, with a Rating = 0 (no fungal growth on surface). This UL Listed duct sealant is tested to ASTM E84 and meets NFPA 90A and 90B 25/50 requirements.

UV Rated, Fire Resistant,
water based, non toxic,
VOC Rated and inhibits
mold and
mildew growth.





Flexmaster offers quality sheet metal products with distinct advantages and excellent value intended to improve system performance or enhance overall aesthetics. Our products are manufactured in a wide range of diameters, gauges and metal alloys suitable for any HVAC application.

Spiral Duct

Unique lock-formed seam and consistent calibrated tolerances combine to produce a superior quality product in a wide range of gauges to SMACNA Standards. Spiral duct is available in Galvanized, Satin Coat, Aluminum, 304/316 Stainless Steel, in diameters ranging from 3" to 72". Standard length - 10ft. Also available in double wall, insulated.



Platinum Flow® – Single Wall

Innovative self-sealing round duct system. Designed to exceed SMACNA's duct construction standards. Complete system available in single wall, double wall insulated as well as custom design capabilities.



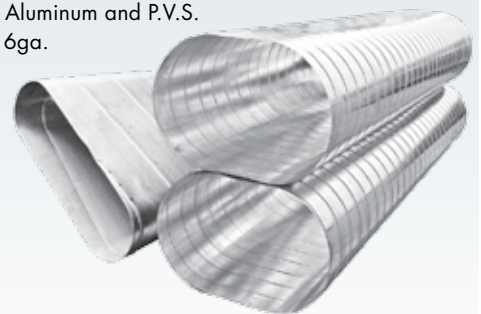
Fume Vent Lab Smart Laboratory Exhaust System

Features factory expanded pipe and fitting ends. Fusion welded air and watertight pipe seams. Fully welded fittings 4" through 24" diameters. Lab-Smart design. Directional exhaust flow. Self-supporting connections. Field labour savings. Cut to length on site. Constructed from 20 GA Stainless Steel 304L/316L Stainless Steel. Meets SMACNA's RT-6 Standard. Applications include: Anaesthetic gas scavenging systems; hot lab exhaust; bio-safety cabinets; car wash exhaust.



Flat Oval Duct & Fittings

Flat Oval ductwork is manufactured from a mechanically locked spiral seam that is evenly spaced for those tight places. Duct and fittings are constructed to SMACNA duct standards for high, medium, low and negative pressure classes. Flat Oval is available in slip fit or flange connections along with a variety of material options which include Galvanized, Satin Coat, Stainless Steel, Aluminum and P.V.S. from 24ga to 16ga. Also available in double wall insulated.



Consider registers and in-line silencers if you need to eliminate unwanted fan or duct vibration noise. Flexmaster can supply the Sound Attenuation and Insertion Loss data to assist you in the selection process. Reduce broadband or tonal noise by lowering dB levels and decreasing the overall NC Rating.

Platinum Flow® – Double Wall

Innovative self-sealing round duct system. Designed to exceed SMACNA's duct construction standards. Complete system available in single wall, double wall insulated as well as custom design capabilities.



P.V.S. Under-slab/Corrosive Environment Duct

P.V.S. is an engineered Duct system for use as an under-slab duct or in corrosive environments such as natatoriums. P.V.S. is a G90 galvanized sheet bonded on both sides with 4 mil. Polyvinyl Chloride. P.V.S. duct will not rust, chip, crack, peel, corrode, or off gas. Service temperature -40 F to 350F. P.V.S. is non-flammable and UL listed as a Class 1 air duct. Full duct systems are provided in both rectangular and round configurations.



Silencers

Strategically locate these in-line silencers to eliminate noise problems. All silencers come with double-lipped EPDM self-sealing gaskets for easy system integration. Available in diameters from 3" to 50", lengths from 1 ft. to 8 ft., insulation thicknesses from 2" to 6". Insertion loss data and pressure drop information available on request.



Registers

Supply or return RGS-3 register with adjustable double deflection blade and volume damper mount directly onto spiral duct. Eliminates unsightly rectangular register taps. No leakage; manufactured from heavy gauge galvanized steel; available in 21 sizes. Performance data available on request. Drum Louvers also available.





Multi-Cut Hole Cutter

The Multi-Cut Hole Cutter is ideal for cutting large quantities of identical holes ideal for spin-on cut-ins. It can cut perfect holes from 2" to 12" diameter through a wide range of gauges. It comes with a solid cast aluminum body, adjustable nut & pivot pin, and easy to read scale. Replaceable three fluted cutting bits are available.



Nylon Tensioning Clamps

Complete with 8" body, 1/4" square rod, locking quadrant, heavy duty handle, 1" standoff regulator; with or without damper; in diameters ranging from 6" to 20". Blades are specially designed for optimum linear balancing. Recommended for insulated ductwork.



Gear Clamps

Constant tension clamps come with a 5/16" hex slotted head and 1/2" wide stainless steel band. Fully adjustable and ideal for making flexible duct connections in diameters ranging from 2" to 24". Offer maximum strength and anti-shear protection. Not recommended for underground applications.



Bridge Clamps

Stainless steel bridge clamps, in comparison to traditional band clamps provide a superior seal for both interior and exterior helix ducting. The flat band clamps snugly around the material between the raised helix, assuring a tight seal at the venting connection.



The information provided within is for informational purposes only. We have made every effort to ensure the accuracy of the provided information and assume no responsibility for any loss or damage due to errors or omissions or to the use or misuse of any information supplied. It is impossible to test all products under all conditions to which they might be subjected in the field. It is therefore the buyer and/or end users' responsibility to test all products under the conditions that duplicate the service conditions prior to installation. All improvements, all specifications are subject to change without prior notice. It is the buyer and/or end users' responsibility to review our complete Terms and Conditions of Sale located on our web sites at: www.novaflex.com | www.z-flex.com | www.flexmaster.com.

20 East Pearce Street, Unit 1
Richmond Hill, ON L4B1B7

Email: sales@flexmaster.com
Website: www.flexmaster.com

FLEXMASTER CANADA

RICHMOND HILL, ON
Tel: 905.731.9411
Fax: 905.731.7086

ETOBICOKE, ON
416.679.0045
416.679.0051

POINT CLAIRE, PQ
514.697.3701
514.697.3767

CALGARY, AB
403.277.3115
403.276.1309

DELTA, BC
604.940.6401
604.940.6402